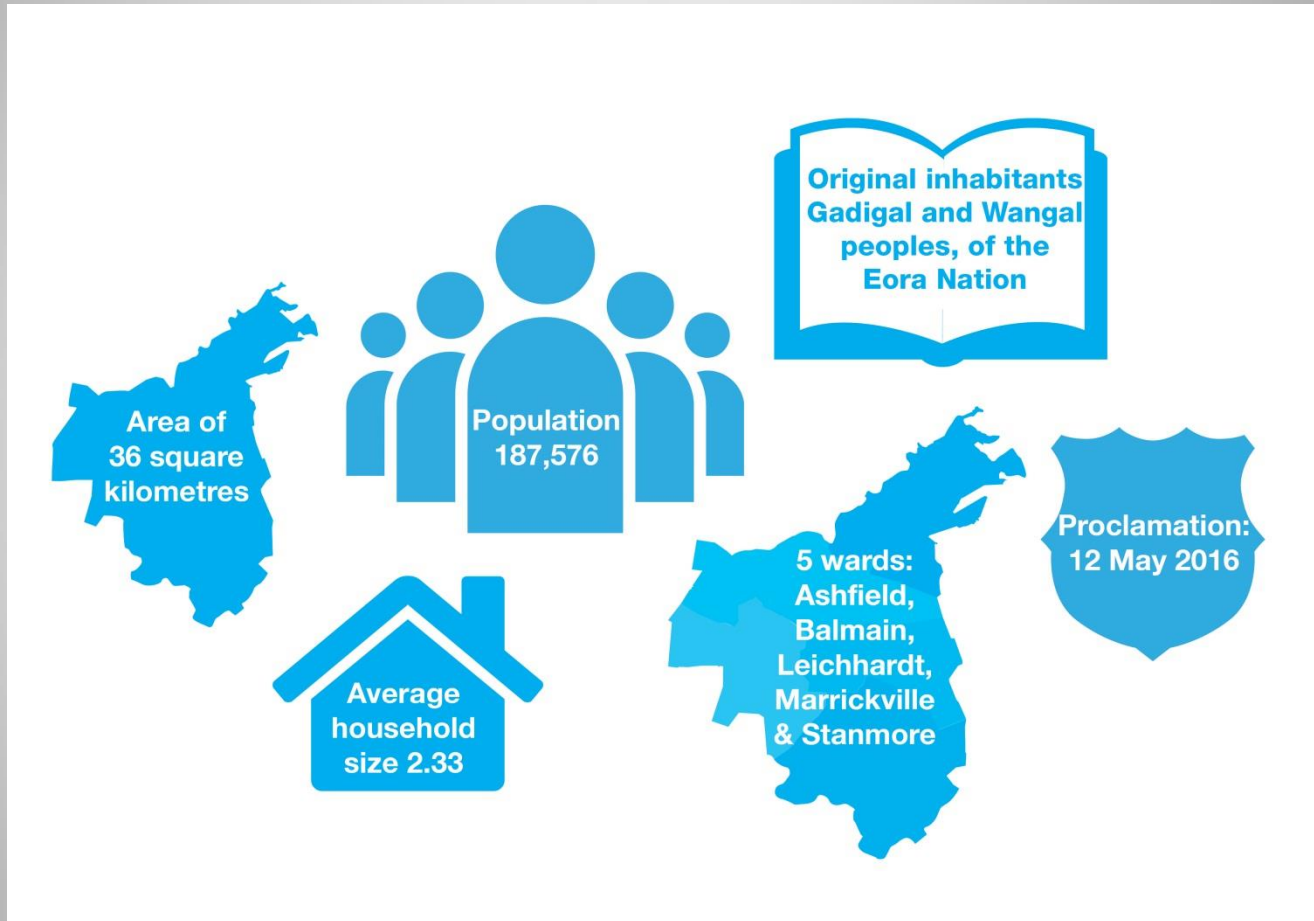


# Inner West Strategic Transport Planning Context

*Bicycle Working Group*



# Community profile



Additional 41,550 people by 2036

# Traffic

Average daily main road traffic:

- City West Link – 74,367
- Princes Highway – 69,034 (Tempe)
- Parramatta Road – 62,523 (Summer Hill)
- Victoria Road - 35,409 (Rozelle)
- Liverpool Road – 24,101 (Summer Hill)
- Old Canterbury Road – 22,465
- King Street – 20,789.

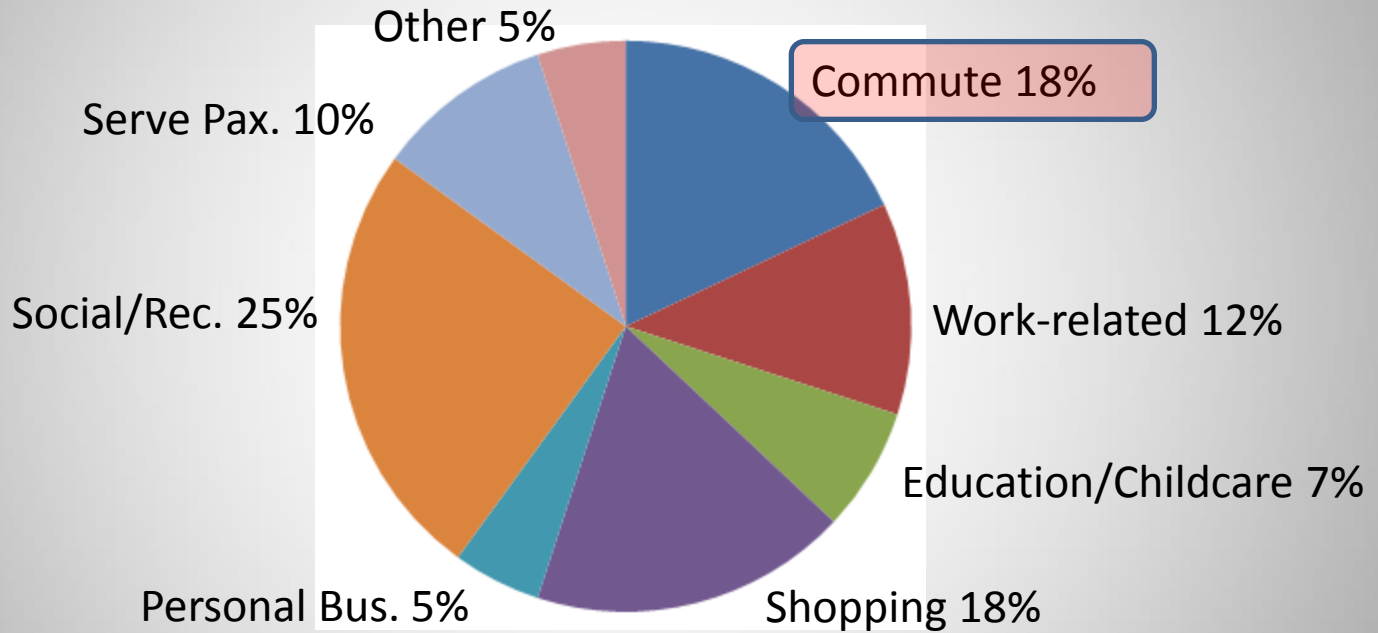


# Getting to Work

- Car – 41% (37,409)
- Public transport - 34.7% (31,696)
- Cycle – 3.1% (2,873)
- Walk – 5.1% (4,687)
- Worked from home – 3% (2,694)
- *33% work in LGA.*



# Reason for Travel







Sydney Gateway  
 Sydenham Stn Upgrade  
 Petersham Stn Upgrade  
 Sydney Airport Master Plan 2019  
 F6 Extn

# Construction traffic impacts

- Glebe Island Multi-user facility - approx. 1200 truck movements/day
- Glebe Island Concrete batching works – approx. 2000 trucks movement/day
- M4-M5 Link - approx. 1120 truck movements/day
- Western Harbour Tunnel - approx. 260 truck movements/day
- ***Total Truck from above – over 4500 truck movements/day***
- Plus – Bays Precinct, Parramatta Road, Sydenham-Bankstown .....

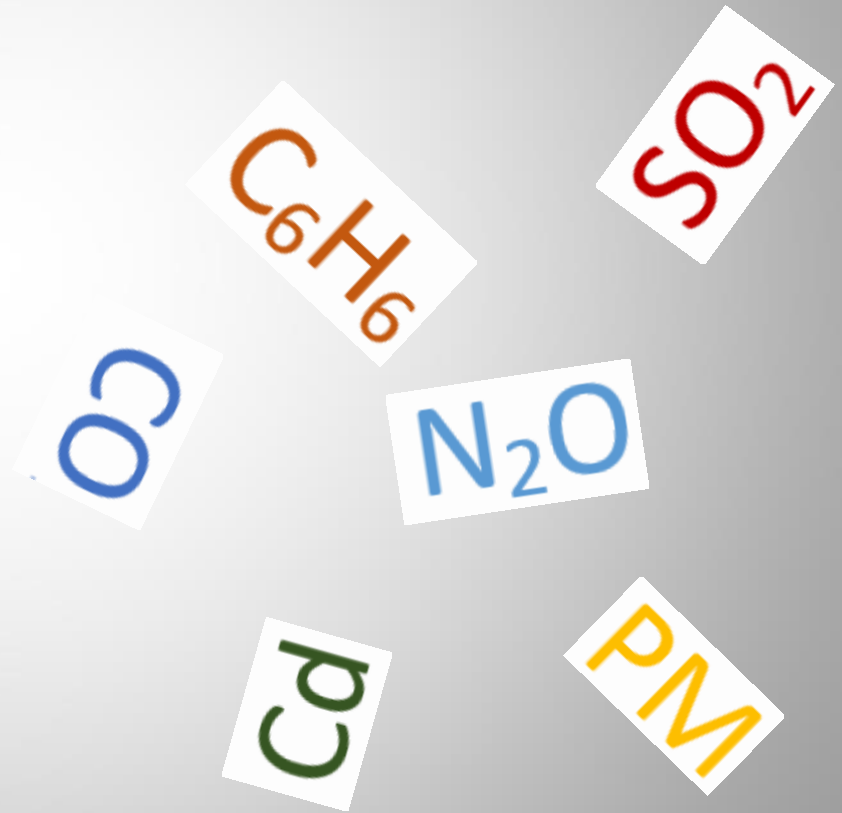
# Why Active & Sustainable Travel

- Private car dependency (20,000km/yr)
  - Fiesta                      2.8 tonne CO<sub>2</sub>
  - Escape                      3.6 tonne CO<sub>2</sub>
  - F150                         8.0 tonne CO<sub>2</sub>
- Small super market = 200 cars/day (Fiestas) nearly 560 tonne of CO<sub>2</sub>/yr
- WestConnex    40,000 induced private car trips/day  
... approx. 240 tonne of CO<sub>2</sub>/day.



# What else is produced?

- Carbon Monoxide (CO)
- Benzene (C<sub>6</sub>H<sub>6</sub>)
- Cadmium (Cd)
- Nitrogen Oxide (N<sub>2</sub>O)
- Sulphur Dioxide (SO<sub>2</sub>)
- Particulates etc etc etc



# Planning Framework



# In a Nutshell:

- True integration
- Active transport
- 10 minute walkable neighbourhoods
- Work-based and residential travel plans
- New Functional Road Hierarchy
- Work across boundaries
- Regional approach to transport planning
- Funding.

# Current state of play

- Leichhardt
  - Integrated Transport Plan 2014
  - Bike Plan 2016
- Marrickville
  - Integrated Transport Plan 2007
  - Bike Plan 2007
- Ashfield - bike map and access guide.

# Timeline

2018-19

2019-20

2020-21

Transport Needs Study

Integrated Transport Plan

Active Transport Plan

Bicycle Works  
Implementation Plan

Pedestrian Works  
Implementation Plan

Current Implementation Program



# Now & Next!

